

LITE TOPS

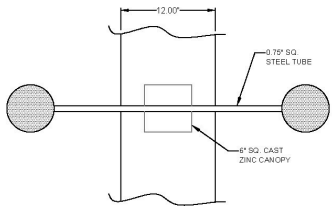


MADE IN AMERICA

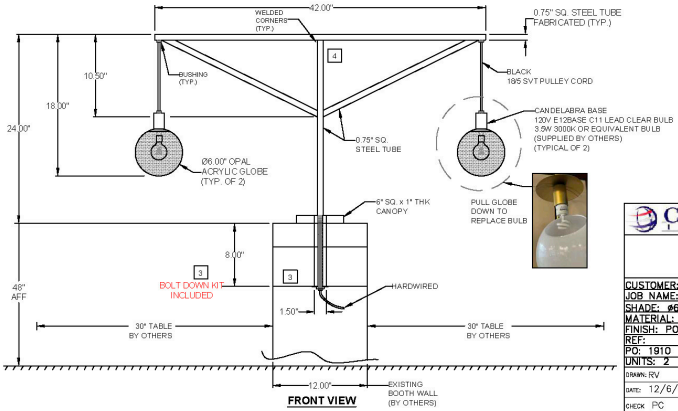


NOTES:

- 1 LITETOP RESERVES THE RIGHTS TO MAKE MINOR CHANGES TO THIS DRAWING AS REQUIRED BY PRODUCTION CONSTRAINTS.
- 2 LITETOP TO DETERMINE WIRING, ASSEMBLY, AND SHIPPING METHOD.
- 3 EXTEND STEEL TUBE DEEPER INTO WALL TO ENSURE STABILITY OF POST. INSIDE HORIZONTAL SUPPORT BY OTHERS.
- 4 T-BRACKET TO BE FABRICATED AS ONE PIECE USING WELDING METHOD.
- 5 ALL EXPOSED METAL TO BE POWDER COATED BLACK.



TOP VIEW



FRONT VIEW



1233 WEST ST. GEORGES AVE.
LINDEN, NJ 07036
908-925-7500 FAX: 908-925-9240

CUSTOMER: AVALON BRIGHTON/REP.: DS
JOB NAME: BOOTH LIGHTS
SHADE: #6" ACRYLIC GLOBE X 24" DIAH
MATERIAL: ACRYLIC & METAL
FINISH: POWDER COATED BLACK
REF:
PO: 1910
UNITS: 2

DRAWN: RV
DATE: 12/6/2022
CHECK: PC
APPR: PC
ISSUED:
REV. DATE: 12/9/2022

2-LIGHT ACRYLIC GLOBE PENDANT
SIZE: A
DWG NO: 4387
REV: 1
SCALE: -
SHEET: 10F1

THE INFORMATION CONTAINED IN THIS DRAWING IS THE SOLE PROPERTY OF CUTTING EDGE INDUSTRIES. ANY REPRODUCTION IN PART OR WHOLE WITHOUT THE WRITTEN PERMISSION OF CUTTING EDGE INDUSTRIES WILL BE SUBJECT TO LEGAL PROSECUTION.