

# LITE TOPS

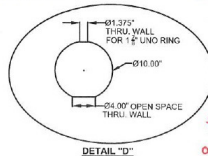
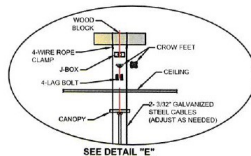
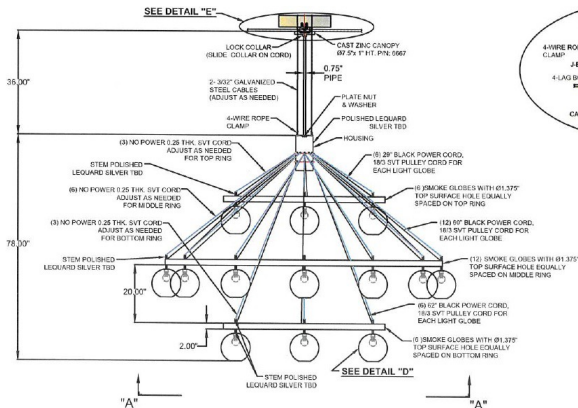


**MADE IN AMERICA**





Type P

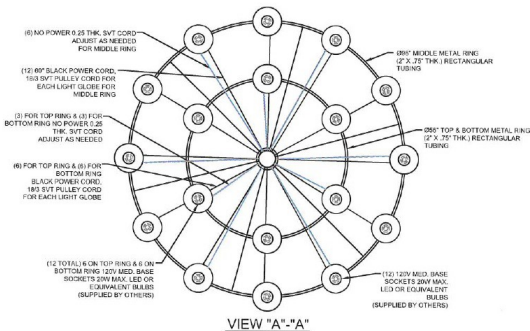


Approved if all cords are hidden in the black cords  
-Katie Murphy *Katie*

Lindsay Taylor Bell to provide approval on bulbs.

## NOTES:

- 1 LIFTOP TO DETERMINE WIRING, ASSEMBLY, AND SHIPPING METHOD.
- 2 LIFTOP RESERVES THE RIGHTS TO MAKE MINOR CHANGES TO THIS DRAWING AS REQUIRED BY PRODUCTION CONSTRAINTS.



**CUTTING EDGE INDUSTRIES** **LITE TOPS** **Stiffel**

1233 WEST ST. GEORGES AVE.  
LINDEN, NJ 07036  
908-925-7500 FAX: 908-925-9240

CUSTOMER: LINDSAY @ AUMEN ASNER/REP.: KRAUS  
JOB NAME: TYPE K & P  
SHADE: 996"W X 78" H  
MATERIAL: METAL/ACRYLIC  
FINISH: MATT BLACK ON RINGS/POLISHED LEQUARD SILVER  
REF:  
PO: 106526  
UNITS: 1

DRAWN: EP  
DATE: 12/08/2022  
CHECK: PC  
APPR: PC

Ø96" CUSTOM  
3 RING PENDANT

ISSUED:  
REV. DATE: 03/08/2023

SIZE	DWG NO.	REV
A	4386	5

SCALE: -  
SHEET: 1 OF 1  
THE INFORMATION CONTAINED IN THIS DRAWING IS THE SOLE PROPERTY OF CUTTING EDGE INDUSTRIES. ANY REPRODUCTION IN PART OR WHOLE WITHOUT THE WRITTEN PERMISSION OF CUTTING EDGE INDUSTRIES WILL BE SUBJECT TO LEGAL PROSECUTION.

