


LITE  **TOPS**

 **MADE IN AMERICA**

joe kraus lighting 

301-537-5808

joe@joe kraus lighting.com

www.joe kraus lighting.com

“Aspen at Milford”





Type P

Approved if all cords are hidden in the black cords
-Katie Murphy *Katie*

Lindsay Taylor Bell to provide approval on bulbs.

NOTES:

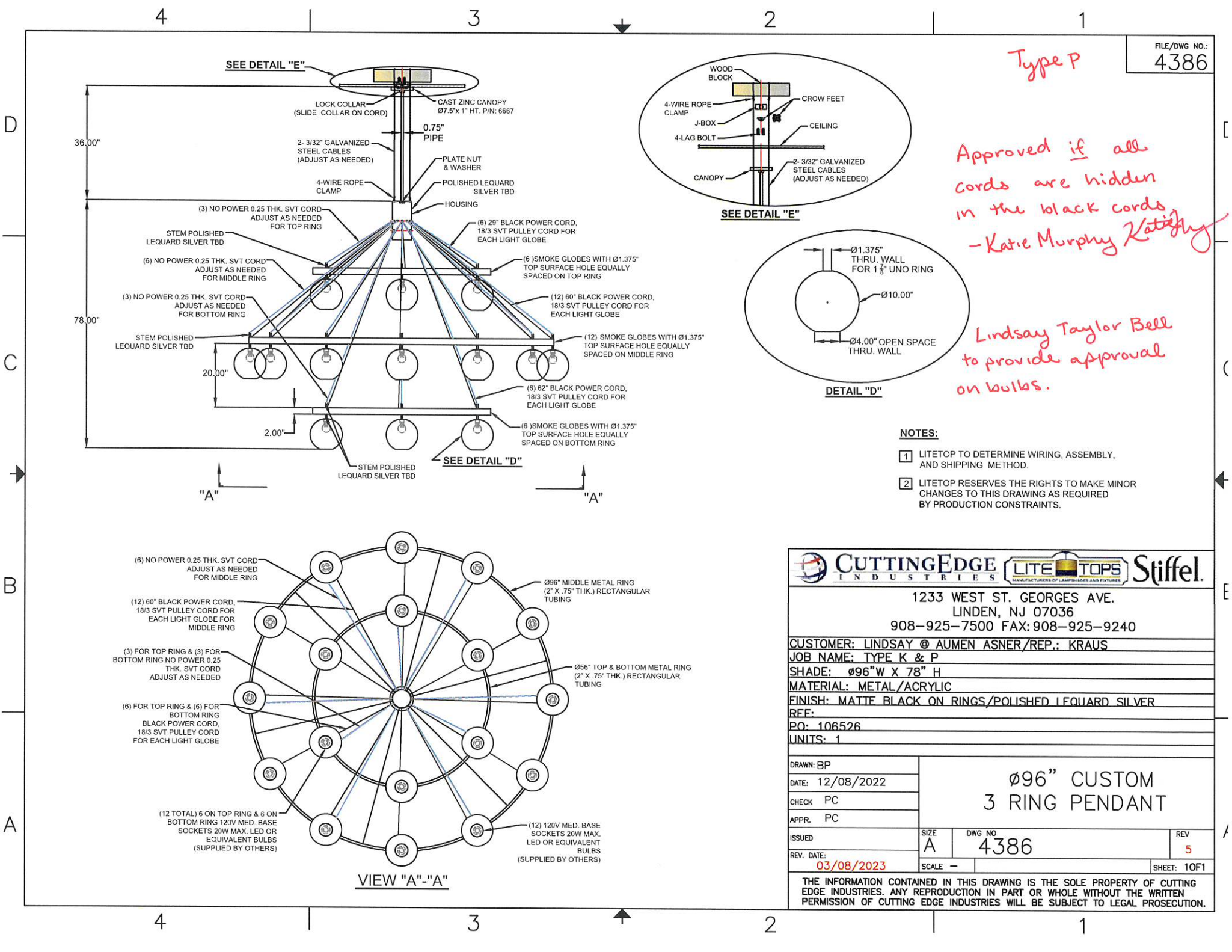
- 1 LITETOP TO DETERMINE WIRING, ASSEMBLY, AND SHIPPING METHOD.
- 2 LITETOP RESERVES THE RIGHTS TO MAKE MINOR CHANGES TO THIS DRAWING AS REQUIRED BY PRODUCTION CONSTRAINTS.

SEE DETAIL "E"

SEE DETAIL "E"

DETAIL "D"

SEE DETAIL "D"



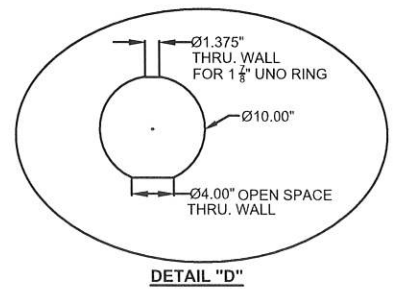
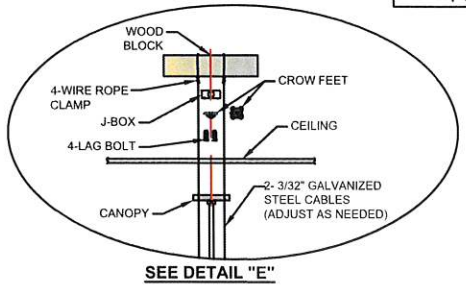
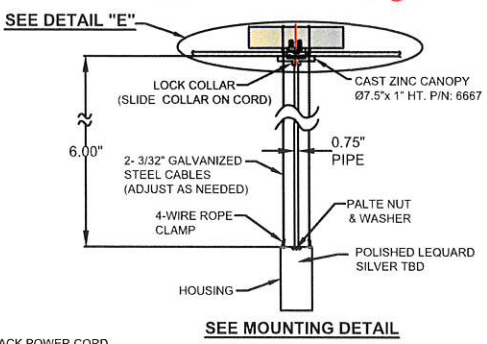
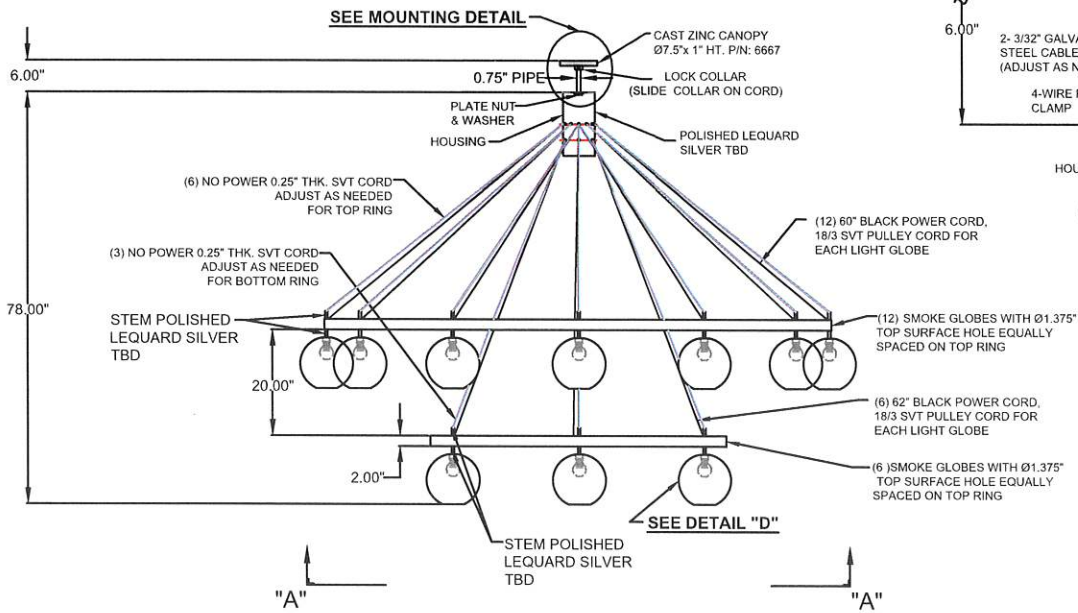
		Stiffel	
1233 WEST ST. GEORGES AVE. LINDEN, NJ 07036 908-925-7500 FAX: 908-925-9240			
CUSTOMER: LINDSAY @ AUMEN ASNER/REP.: KRAUS			
JOB NAME: TYPE K & P			
SHADE: Ø96"W X 78" H			
MATERIAL: METAL/ACRYLIC			
FINISH: MATTE BLACK ON RINGS/POLISHED LEQUARD SILVER			
RFF:			
PO: 106526			
UNITS: 1			
DRAWN: BP		Ø96" CUSTOM 3 RING PENDANT	
DATE: 12/08/2022			
CHECK: PC			
APPR: PC			
ISSUED:			
REV. DATE: 03/08/2023	SIZE: A	DWG NO: 4386	REV: 5
SCALE: -		SHEET: 1 OF 1	
THE INFORMATION CONTAINED IN THIS DRAWING IS THE SOLE PROPERTY OF CUTTING EDGE INDUSTRIES. ANY REPRODUCTION IN PART OR WHOLE WITHOUT THE WRITTEN PERMISSION OF CUTTING EDGE INDUSTRIES WILL BE SUBJECT TO LEGAL PROSECUTION.			

Approved if all cords are hidden in black cords - *Katie Murphy Katie Murphy*

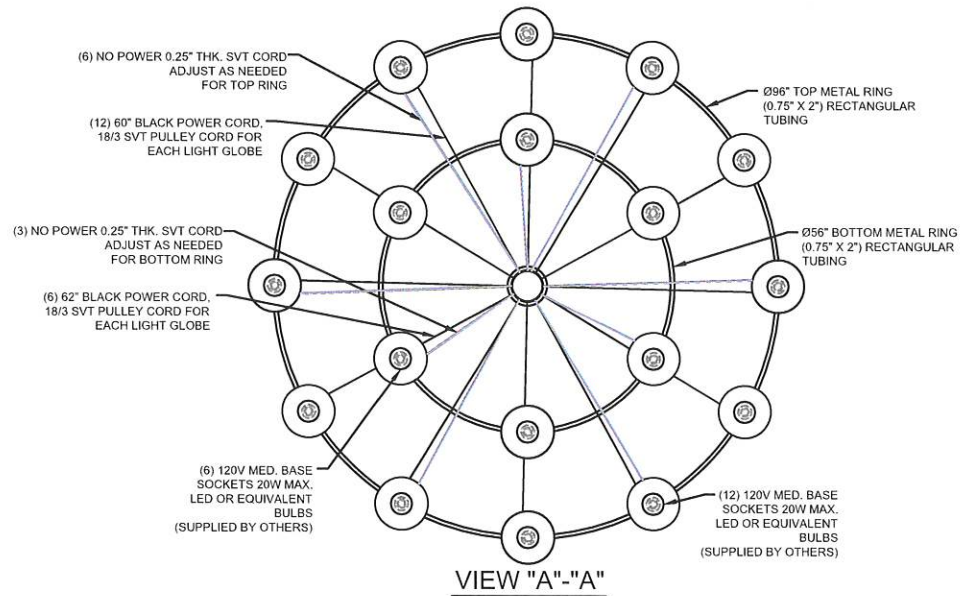
Type K

FILE/DWG NO.: 4385

Lindsay TaylorBell to provide approval on bulbs.



- NOTES:**
- 1 LITETOP TO DETERMINE WIRING, ASSEMBLY, AND SHIPPING METHOD.
 - 2 LITETOP RESERVES THE RIGHTS TO MAKE MINOR CHANGES TO THIS DRAWING AS REQUIRED BY PRODUCTION CONSTRAINTS.



1233 WEST ST. GEORGES AVE. LINDEN, NJ 07036 908-925-7500 FAX: 908-925-9240					
CUSTOMER: LINDSAY @ AUMEN ASNER/REP.: KRAUS					
JOB NAME: TYPE K & P					
SHADE: Ø96"W X 78" H					
MATERIAL: METAL/ACRYLIC					
FINISH: MATTE BLACK ON RINGS/POLISHED LEQUARD SILVER					
REF:					
PO: 106526					
UNITS: 3					
DRAWN: BP			Ø96" CUSTOM 2 RING PENDANT		
DATE: 12/08/2022					
CHECK: PC					
APPR: PC					
ISSUED		SIZE A	DWG NO 4385	REV 5	
REV. DATE: 03/08/2023		SCALE: -	SHEET: 10F1		
THE INFORMATION CONTAINED IN THIS DRAWING IS THE SOLE PROPERTY OF CUTTING EDGE INDUSTRIES. ANY REPRODUCTION IN PART OR WHOLE WITHOUT THE WRITTEN PERMISSION OF CUTTING EDGE INDUSTRIES WILL BE SUBJECT TO LEGAL PROSECUTION.					

joe kraus lighting 

301-537-5808

joe@joekrauslighting.com

www.joekrauslighting.com