

LITE TOPS



MADE IN AMERICA

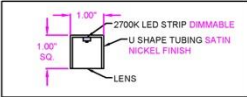
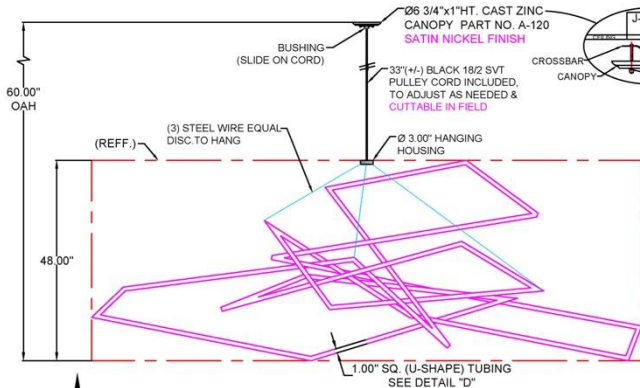








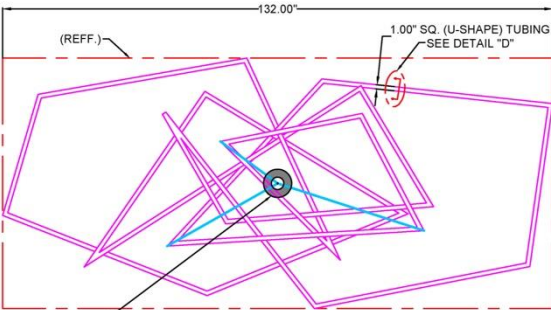




DETAIL "D"
SCALE 1:8

NOTES:

- 1 LITETOP RESERVES THE RIGHTS TO MAKE MINOR CHANGES TO THIS DRAWING AS REQUIRED BY PRODUCTION CONSTRAINTS.



VIEW "A"-A"

| | |
|--|--|
| | |
| 1233 WEST ST. GEORGES AVE. LINDEN, NJ 07036 908-925-7500 FAX: 908-925-9240 | |
| CUSTOMER: JESSICA WEBSTER @ MARRIOTT/REP: DOUG SNEED JOB NAME: SHERATON HARTFORD BRADLEY SHADE: 132"W x 48HT. x 60"D MATERIAL: METAL/ACRYLIC FINISH: SATIN NICKEL REF: LT-112 PO: 0055088219 | |
| UNITS: 1 | |
| DRAWN: BIPIN DATE: 3/31/2025 CHECK: PC APPR: PC | 132"W x 48"HT. CUSTOM GEOMETRIC PENDANT |
| ISSUED: REV. DATE: 4/21/2025 | SCALE: - DWG NO: 5026 REV: 1 |
| THE INFORMATION CONTAINED IN THIS DRAWING IS THE SOLE PROPERTY OF CUTTING EDGE INDUSTRIES. ANY REPRODUCTION IN PART OR WHOLE WITHOUT THE WRITTEN PERMISSION OF CUTTING EDGE INDUSTRIES WILL BE SUBJECT TO LEGAL PROSECUTION. | |