

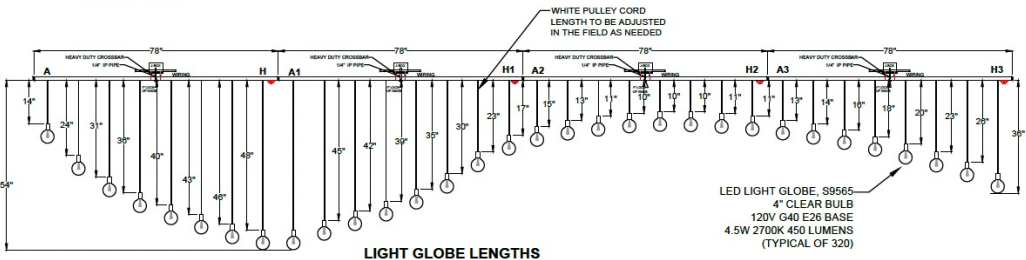
# LITE TOPS



**MADE IN AMERICA**



## SHEET 2 OF 2



### NOTES:

- 1 ALL CABLE & SOCKETS ARE TAGGED AT REQUIRED LENGTH.
- 2 SOCKETS ARE GROUPED & TAGGED FOR THERE LOCATION. FOR EXAMPLE: ROW A THRU H. SEE REFERENCE SHEET 1 OF 2.
- 3 PANEL 1 IS ALREADY PRE-ASSEMBLED FOR YOUR CONVENIENCE. INSTALLER SHOULD FOLLOW THE SAME ARRANGEMENT.

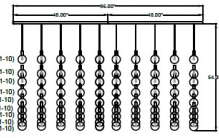
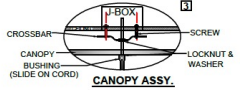
A1-10 FT STEM	B1-10 FT STEM	C1-20 FT STEM	D1-10 FT STEM	E1-10 FT STEM	F1-10 FT STEM	G1-10 FT STEM	H1-10 FT STEM
A1-10 FT STEM	B1-10 FT STEM	C2-20 FT STEM	D2-10 FT STEM	E2-10 FT STEM	F2-10 FT STEM	G2-10 FT STEM	H2-10 FT STEM
A1-10 FT STEM	B1-10 FT STEM	C3-20 FT STEM	D3-10 FT STEM	E3-10 FT STEM	F3-10 FT STEM	G3-10 FT STEM	H3-10 FT STEM
A1-10 FT STEM	B1-10 FT STEM	C4-20 FT STEM	D4-10 FT STEM	E4-10 FT STEM	F4-10 FT STEM	G4-10 FT STEM	H4-10 FT STEM
A1-10 FT STEM	B1-10 FT STEM	C5-20 FT STEM	D5-10 FT STEM	E5-10 FT STEM	F5-10 FT STEM	G5-10 FT STEM	H5-10 FT STEM
A1-10 FT STEM	B1-10 FT STEM	C6-20 FT STEM	D6-10 FT STEM	E6-10 FT STEM	F6-10 FT STEM	G6-10 FT STEM	H6-10 FT STEM
A1-10 FT STEM	B1-10 FT STEM	C7-20 FT STEM	D7-10 FT STEM	E7-10 FT STEM	F7-10 FT STEM	G7-10 FT STEM	H7-10 FT STEM
A1-10 FT STEM	B1-10 FT STEM	C8-20 FT STEM	D8-10 FT STEM	E8-10 FT STEM	F8-10 FT STEM	G8-10 FT STEM	H8-10 FT STEM
A1-10 FT STEM	B1-10 FT STEM	C9-20 FT STEM	D9-10 FT STEM	E9-10 FT STEM	F9-10 FT STEM	G9-10 FT STEM	H9-10 FT STEM
A1-10 FT STEM	B1-10 FT STEM	C10-20 FT STEM	D10-10 FT STEM	E10-10 FT STEM	F10-10 FT STEM	G10-10 FT STEM	H10-10 FT STEM

- NOTES:**
- 8 MOUNTING HOLE LOCATIONS PER PANEL. CUSTOMER TO CONFIRM MOUNTING POINTS.
  - DISTANCES BETWEEN BULBS ARE SHOWN ON DRAWING. GAPS BETWEEN PANELS TO BE DETERMINED BY INSTALLER.
  - J-BOX IS LOCATED IN THE CENTER OF EACH PANEL.
  - BULB SPEC.: LED LIGHT GLOBE, S9565  
4" CLEAR BULB  
120V G40 E26 BASE  
4.5W 2700K 450 LUMENS  
(TYPICAL OF 320)

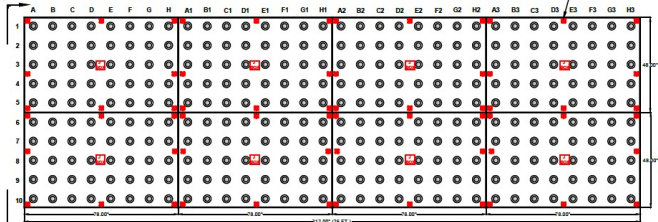
(SEE SHEET 2 OF 3)

A1-10 FT STEM	B1-10 FT STEM	C1-10 FT STEM	D1-10 FT STEM	E1-10 FT STEM	F1-10 FT STEM	G1-10 FT STEM	H1-10 FT STEM
A1-20 FT STEM	B1-20 FT STEM	C1-20 FT STEM	D1-20 FT STEM	E1-20 FT STEM	F1-20 FT STEM	G1-20 FT STEM	H1-20 FT STEM
A1-30 FT STEM	B1-30 FT STEM	C1-30 FT STEM	D1-30 FT STEM	E1-30 FT STEM	F1-30 FT STEM	G1-30 FT STEM	H1-30 FT STEM
A1-40 FT STEM	B1-40 FT STEM	C1-40 FT STEM	D1-40 FT STEM	E1-40 FT STEM	F1-40 FT STEM	G1-40 FT STEM	H1-40 FT STEM
A1-50 FT STEM	B1-50 FT STEM	C1-50 FT STEM	D1-50 FT STEM	E1-50 FT STEM	F1-50 FT STEM	G1-50 FT STEM	H1-50 FT STEM
A1-60 FT STEM	B1-60 FT STEM	C1-60 FT STEM	D1-60 FT STEM	E1-60 FT STEM	F1-60 FT STEM	G1-60 FT STEM	H1-60 FT STEM
A1-70 FT STEM	B1-70 FT STEM	C1-70 FT STEM	D1-70 FT STEM	E1-70 FT STEM	F1-70 FT STEM	G1-70 FT STEM	H1-70 FT STEM
A1-80 FT STEM	B1-80 FT STEM	C1-80 FT STEM	D1-80 FT STEM	E1-80 FT STEM	F1-80 FT STEM	G1-80 FT STEM	H1-80 FT STEM
A1-90 FT STEM	B1-90 FT STEM	C1-90 FT STEM	D1-90 FT STEM	E1-90 FT STEM	F1-90 FT STEM	G1-90 FT STEM	H1-90 FT STEM
A1-100 FT STEM	B1-100 FT STEM	C1-100 FT STEM	D1-100 FT STEM	E1-100 FT STEM	F1-100 FT STEM	G1-100 FT STEM	H1-100 FT STEM

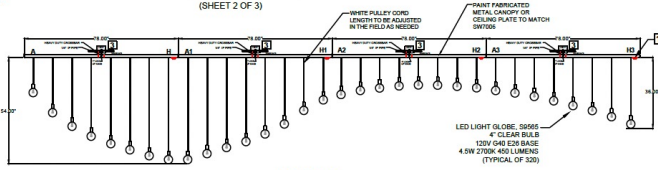
J-BOX & CANOPY TO BE SUPPORTED BY A BEAM ANCHORING METHOD TO BE DETERMINED BY INSTALLER TO SUPPORT THE LOAD.



VIEW "A"- "A"



**BOTTOM VIEW DETAIL**  
(SHEET 2 OF 3)



**FRONT VIEW**  
(SEE SHEET 3 OF 3)



1233 WEST ST. GEORGES AVE.  
LINDEN, NJ 07036  
908-925-7500 FAX: 908-925-9240

**CUSTOMER:** CURIOS LAS OLAS / REP.: DS  
**JOB NAME:**  
**SHADE:** SEE DRAWING  
**FABRIC:** SEE DRAWING  
**FINISH:** WHITE PAINT  
**REF.:**  
**PC:**  
**UNITS:** 1  
**DRAWN:** RV  
**DATE:** 9/10/2019  
**CHECK:** PC  
**APPR.:** PC  
**ISSUED:**  
**REV. DATE:** 10/17/2019  
**SCALE:** --  
**SHEET:** 1 OF 3

<b>CUSTOM HINGING PENDANTS</b>		REV 7
SIZE A	DWG. NO. 3306	REV 7

THE INFORMATION CONTAINED IN THIS DRAWING IS THE SOLE PROPERTY OF CUTTING EDGE INDUSTRIES. ANY REPRODUCTION IN PART OR WHOLE WITHOUT THE WRITTEN PERMISSION OF CUTTING EDGE INDUSTRIES WILL BE SUBJECT TO LEGAL PROSECUTION.